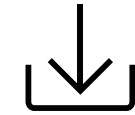


OPENCOMM2 UC

User Guide

C110

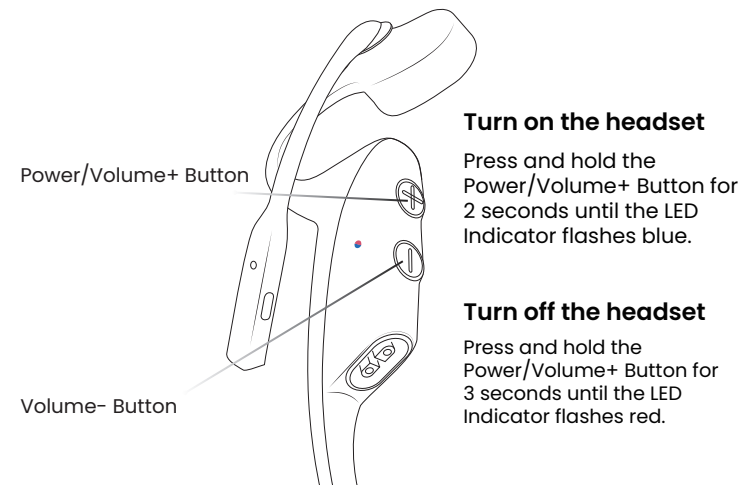


Please refer to the following for more details

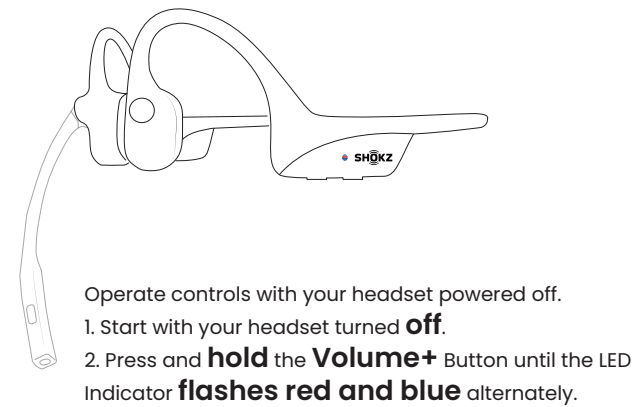
userguide.shokz.net/opencomm2uc

8000500222 (A0)

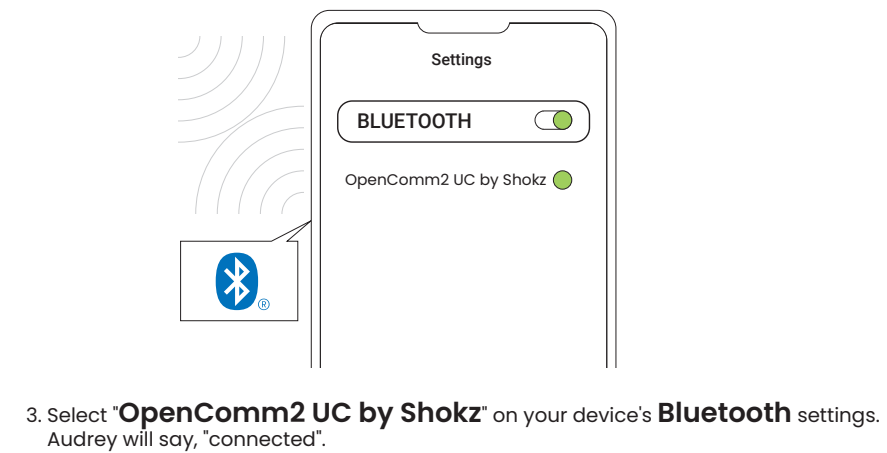
1.ON/OFF



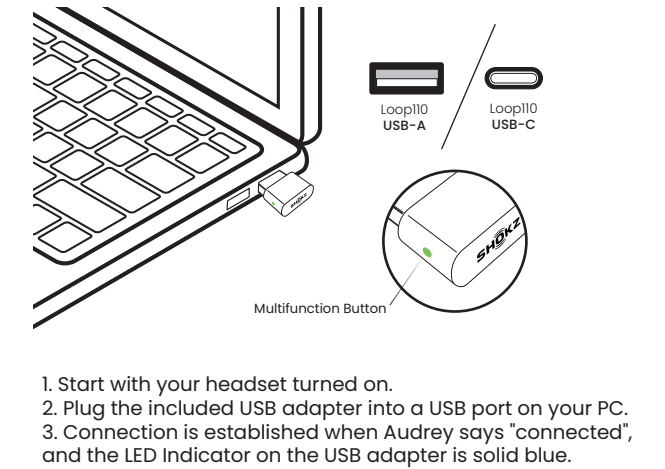
2.Pairing to Mobile Device



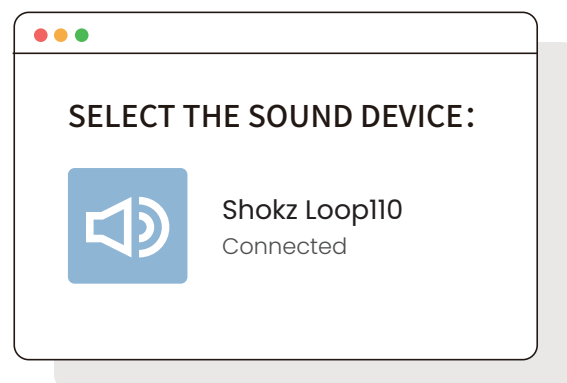
3.Pairing to Mobile Device



4.Pairing to PC

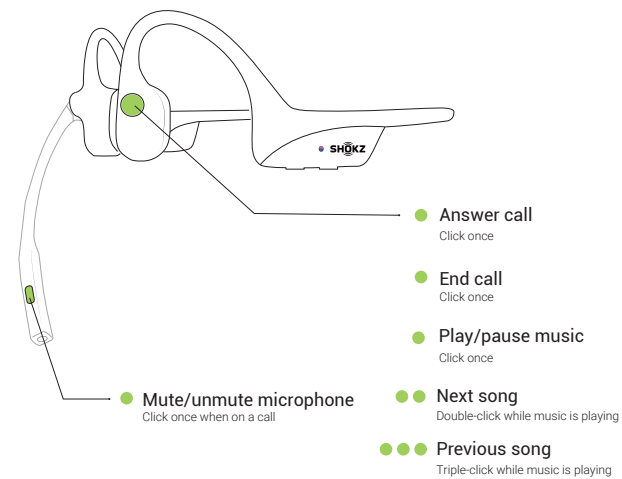


5.Configure

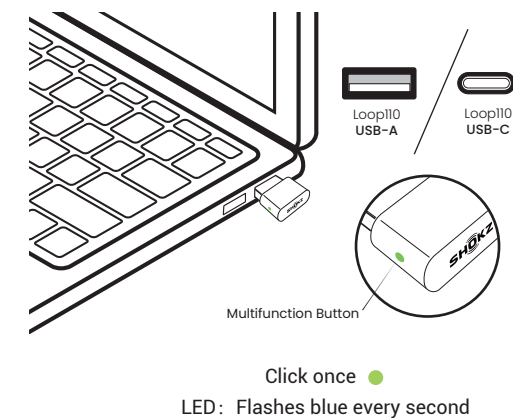


*To play music or take calls on the headset, please ensure the "Shokz Loop110" is both identified as the default input and output devices in your operating system's audio settings.

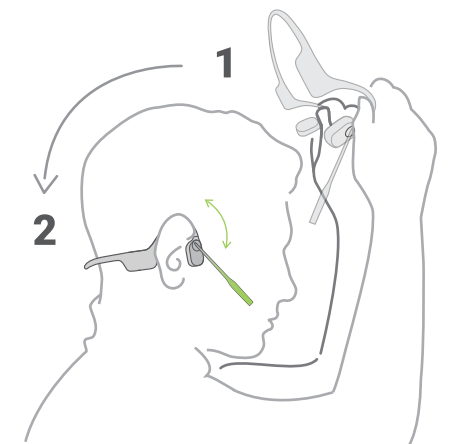
6.Button



7.Reconnect to the last connected headset :



8.How to Wear



*Position the noise-canceling microphone close to your mouth.

